

WYCLIFFE PLAT ONE

PART OF WYCLIFFE GOLF AND COUNTRY CLUB, (FORMERLY KNOWN AS SUNDIAL COUNTRY CLUB), A P.U.D.
SITUATE IN SECTION 25, TOWNSHIP 44 SOUTH, RANGE 41 EAST
PALM BEACH COUNTY, FLORIDA

1989

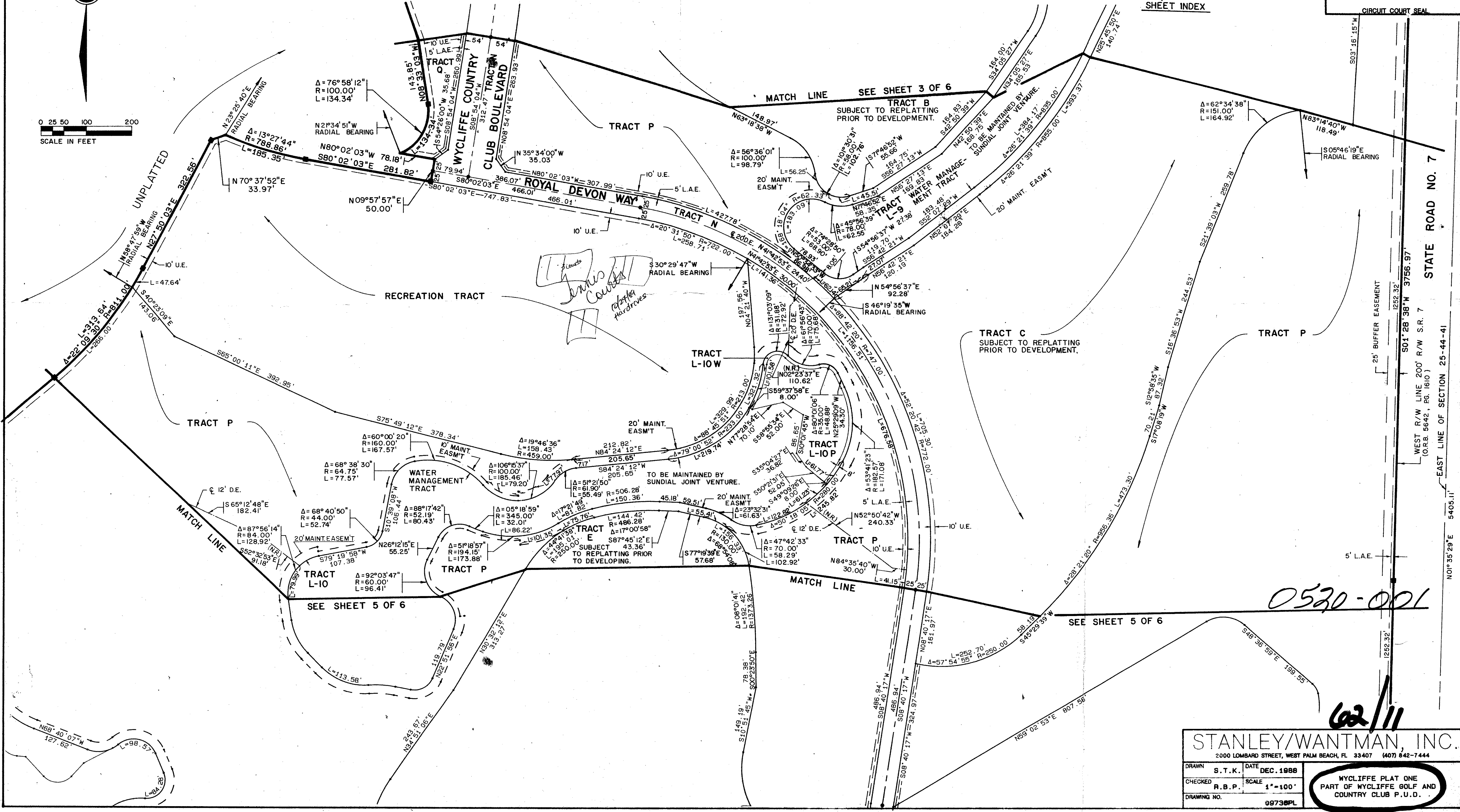
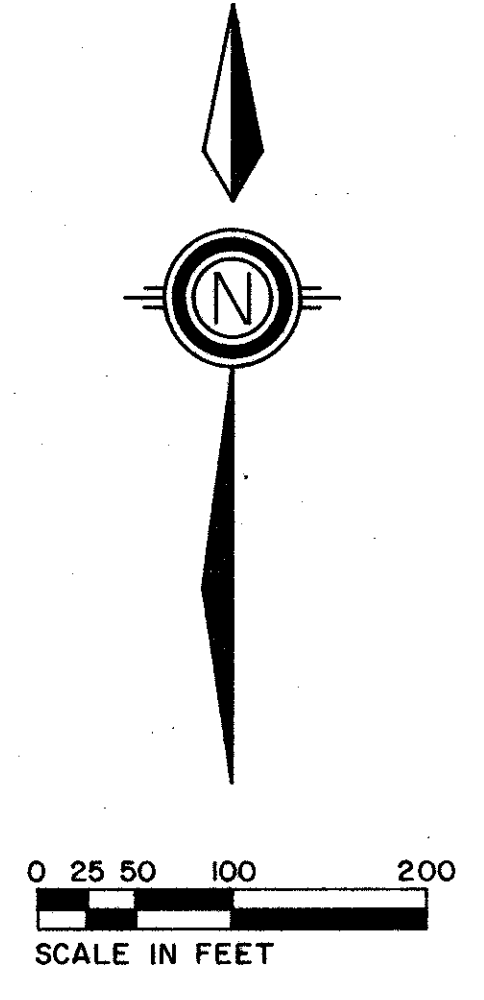
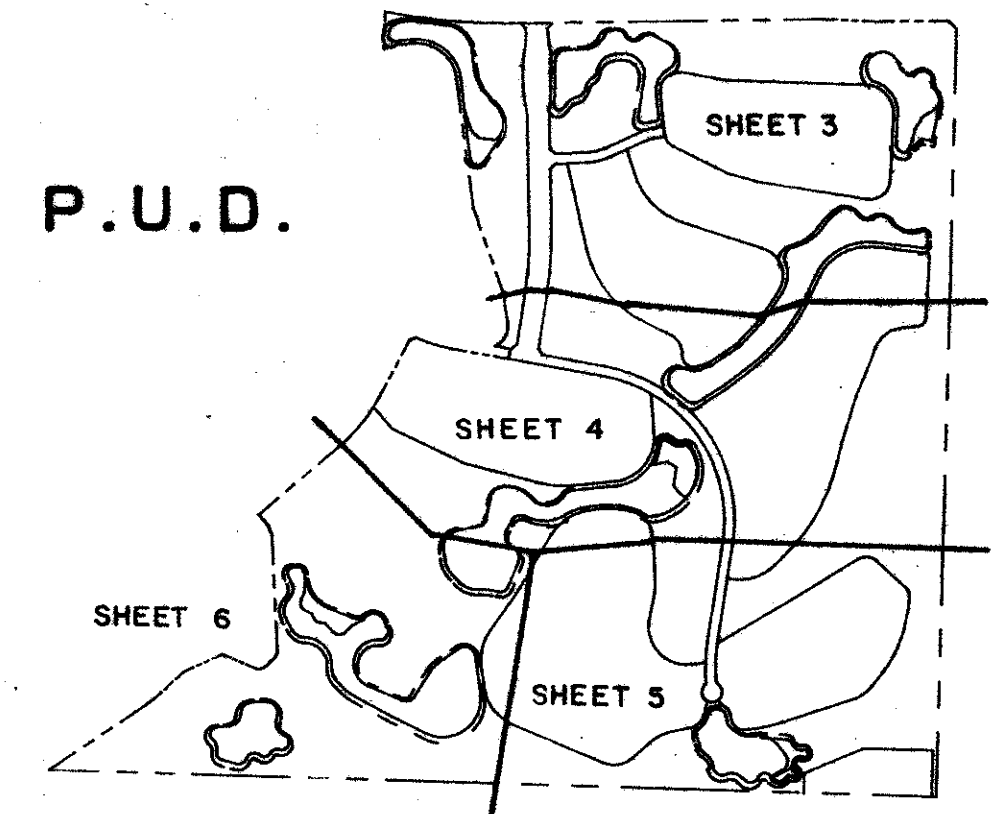
SHEET 4 OF 6

11

STATE OF FLORIDA
COUNTY OF PALM BEACH

THIS PLAT WAS FILED FOR
RECORD _____ DAY OF
AD, 1989 AND DULY RECORDED
IN PLAT BOOK _____ ON PAGES
_____ AND _____

JOHN B. DUNKLE, CLERK
BY: _____, D.C.



SUBDIVISION # Wycliffe
 BOOK 62
 FLOOR PLAN B
 SHEET 63
 PUD BEING
 TAZ 737
 R/S 86-109
 3/3/89

0520-001

62/11

STANLEY/WANTMAN, INC.
2000 LOMBARD STREET, WEST PALM BEACH, FL 33407 (407) 842-7444

DRAWN	S.T.K.	DATE	DEC. 1988
CHECKED	R.B.P.	SCALE	1"=100'
DRAWING NO.	98736PL		

WYCLIFFE PLAT ONE
PART OF WYCLIFFE GOLF AND
COUNTRY CLUB P.U.D.